

AUDIO VIDEO INTERIORS

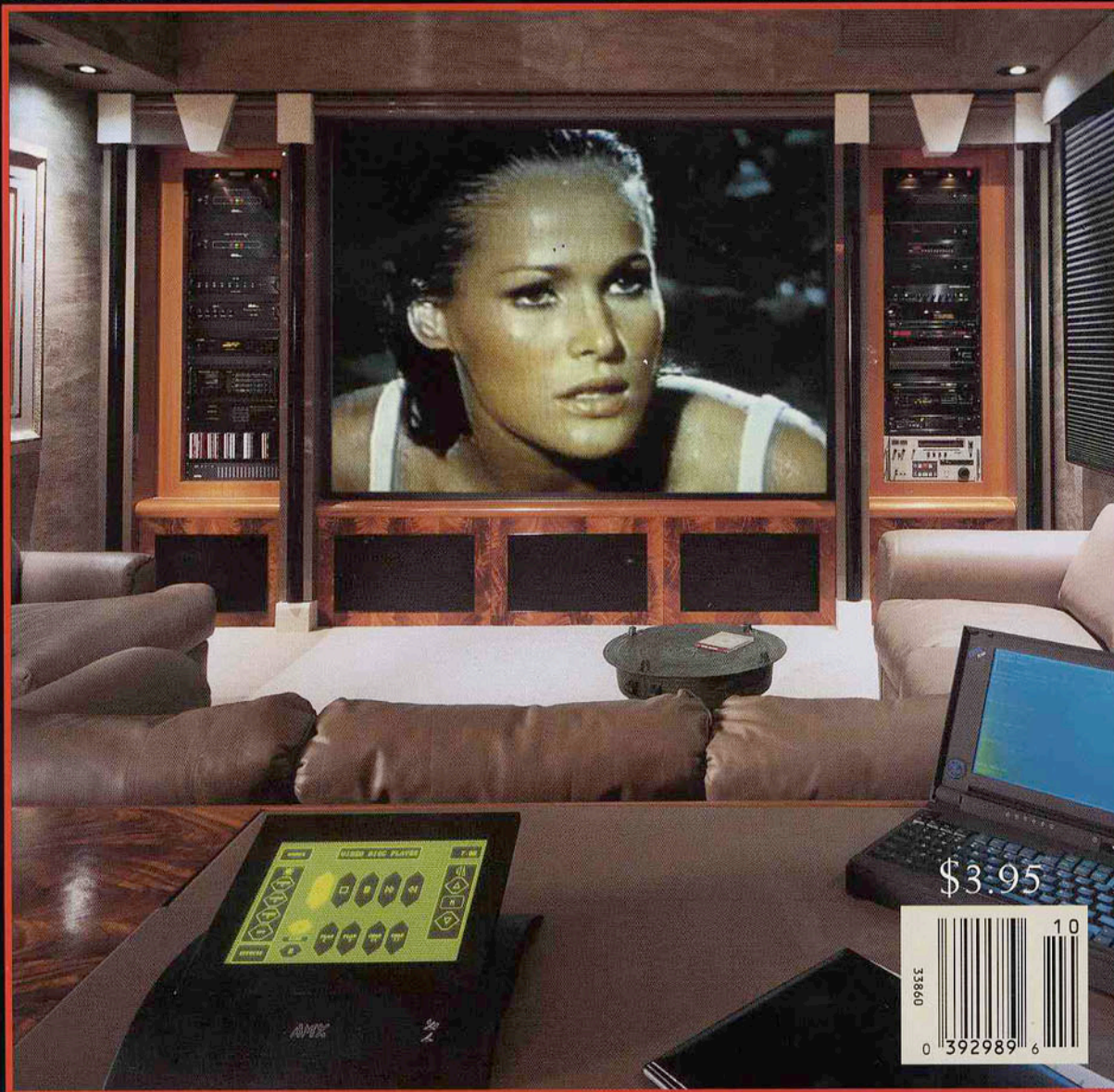
HOME OFFICE EQUIPMENT
AND INTERIORS WITH STYLE

WHOLE-HOUSE AUTOMATION
WITH THE ELAN SYSTEM

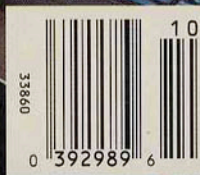
WIRED FOR ENTERTAINMENT:
PREMIUM CABLES REVIEWED

OCTOBER 1994

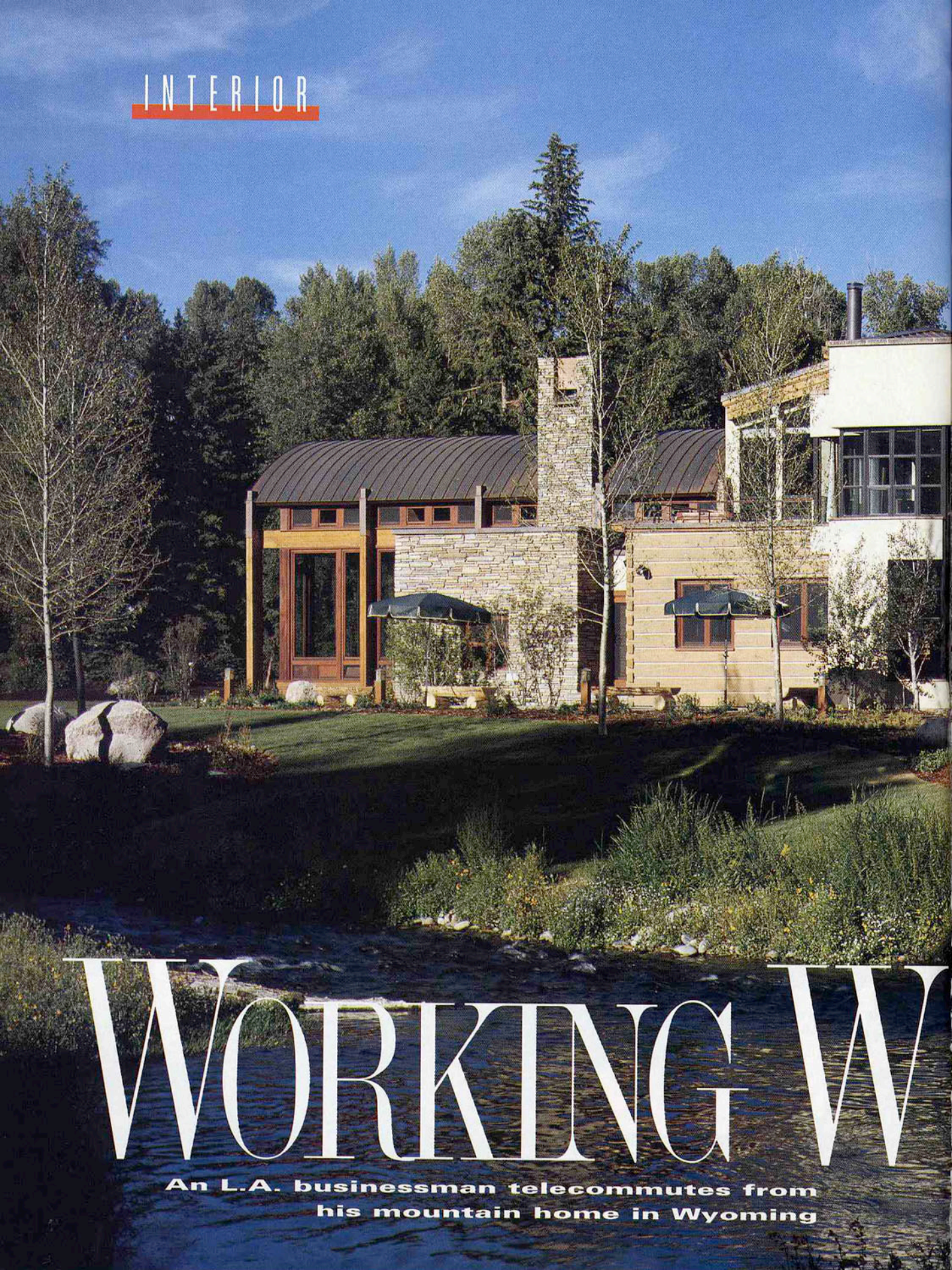
THE HOME THEATER AUTHORITY



\$3.95



INTERIOR



WORKING W

**An L.A. businessman telecommutes from
his mountain home in Wyoming**

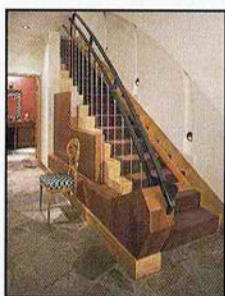


STORY BY JEFFREY BOOK
INSTALLATION BY ELECTRONIC DESIGN ASSOCIATES
ARCHITECTURE BY BERLIN ARCHITECTS
INTERIOR DESIGN BY E.K. REEDY INTERIORS
PHOTOGRAPHY BY RON JOHNSON

ONDERS

WORKING WONDERS

When this homeowner traded in the skyscrapers of Los Angeles for the skyscraping Grand Tetons of Jackson Hole, Wyoming, he wasn't cutting loose from the corporate world. As an investment portfolio manager, he has to stay in touch with world markets as well as the company's L.A. headquarters. Since he carries much of what he needs for work in his head, and can access the rest via phone, fax, computer and courier, he was a prime candidate for a satellite office in a very scenic setting.



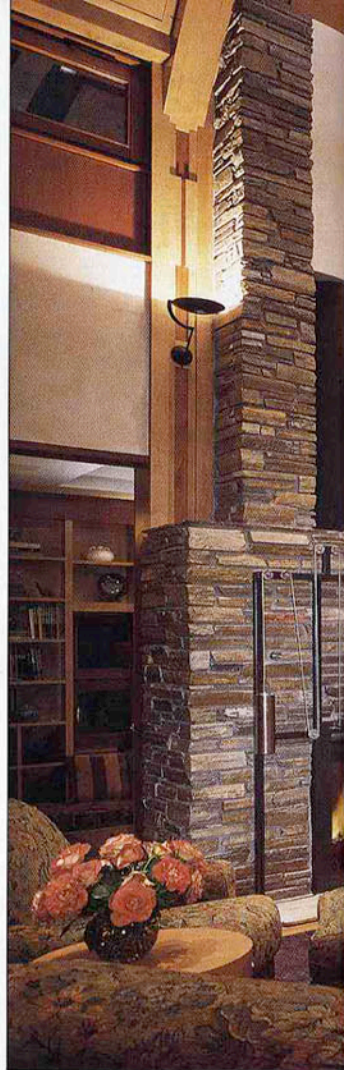
Rugged and refined surfaces contrast nicely throughout this home, which make it conducive to both living quarters and two full-time home offices. All building materials used throughout the home are represented in the entry by the stairs.

The house puts a sophisticated spin on the log-and-stone frontier formula followed by most custom homes in these parts. Architect Tom Ward of Berlin Architects calls it "rustic contemporary," but that hybrid term only vaguely describes the house's distinctive blend of elemental materials, wide open spaces and urbane design features. The log-and-stucco exterior upholds the Wild West spirit of the former ranch property, which has many trees, a trio of trout streams and a golf course. But inside are distinctive spaces punctuated by distinctly modern metalwork and cabinetry.

"In Jackson, everyone likes high-tech toys like Audi Quattros, carbon-fiber mountain bikes and graphite skis, but they leave them at the front door," explains Ward. "We said, let's bring some of that inside, enrich the experience by juxtaposing rugged and refined materials."

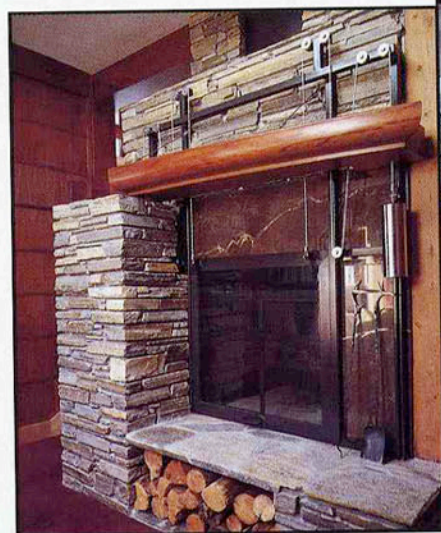
"We wanted to make the house a tactile experience, to evoke a strong response with different finishes and textures," adds interior designer Kathy Reedy of E.K. Reedy Interiors. The result is a pleasing contrast, seen in a rough wood wall's polished mahogany window frame, a laser-cut door relief, the steel-cable balusters that tether a curving metal balustrade.

Underscoring the contemporary tone is a versatile audio/video/security/lighting/communication system supplied by Electronic Design Associates of Jackson Hole. A pair of Audioaccess MRX receivers linked to a Sony 100-CD changer and Yamaha dual-well cassette deck provide multisource audio to the house's 12 zones. Each zone has one or more Audioaccess/LiteTouch wall panels that control both audio and lighting by sending signals to the





Large windows bring views of the Grand Tetons inside the expansive living room, while one of two fireplaces creates a warm and inviting atmosphere. A LiteTouch system activates motorized shades to control ambient light levels and provides thermal insulation on cold nights.





The 22½ × 26-foot media room is completely insulated from sound and light, resulting in perfect conditions to experience home theater. A custom 100-inch rear-projection Uniscreen with angled-mirror assembly folds the beam from the Vidikron projector to fit the five foot depth behind the screen.

WORKING WONDERS



central controller for each system. And each of these in-wall keypads has a built-in IR receiver to permit remote control of source equipment from any zone (RF remote controls command the Toshiba satellite receiver and Winegard dish).

With the help of a Channel Plus modulator, the regular cable channels are augmented by three in-house channels, which carry the satellite signal, current weather information from a Rainwise video weather station installed outside, and whatever's on the computer—usually stock quotes. "We used a VGA-to-NTSC converter to distribute his computer output through all the home TVs, so he can go down and shoot a game of pool and still keep an eye on the market," explains EDA's Jeff McDonald.

"I've been using a dedicated satellite dish for a subscription service called Signal that provides up-to-the-minute stock quotes," the homeowner explains. "I can have them on my office computer upstairs and call them up on any TV in the house. In the near future, I'm going to be linked directly to our L.A. office's main-frame computer files and Quotron system through



a high-speed digital phone line." This, he says, should reduce the volume of faxes and Federal Express packages he receives.

The couple have separate offices that overlook the lofty living room through a big

arched window. This window and the high one between the offices give both work spaces plenty of natural light. Each office is an Audioaccess zone, complete with built-in Xantech speakers. "And I have a small TV in the office, usually tuned to CNBC and muted, which I can turn up if there's anything unusual on," he says. There is also a fire pole, inspired by one his son remembered playing on; the homeowner mentioned it to Ward half-jokingly and it appeared on the plans. Now he uses it to save time going downstairs.

If home is where the hearth is, then the soul of this one must be the living room. A massive stone fireplace opens onto it and the adjoining inglenook, a cozy, book-lined space (a system of pulleys and counterweights raises and lowers each side's glass fire screen). Partially recessed lights and sleek metal ceiling fans accent the curved vault of the living room ceiling. Oper-

MULTIROOM AUDIO

Audioaccess/LiteTouch KPR-1
Decora wall controls (14)
Audioaccess MRX multi-room receivers (2)
Niles VCS-1 wall-mount volume controls (3)
Niles ABS-1 automatic speaker switches (TV sound) (2)
Panamax MAX-6 power-line protector
Sony CDP-CX100 100-disk CD changer
Xantech S-64 speakers (48)
Yamaha KXW-362 dual cassette deck

HOME THEATER

Vidikron TCS-1 RGB video projector
Uniscreen 100-inch custom rear-projection screen with mirror assembly
Miller & Kreisel S-100B shielded speakers (3)
Miller & Kreisel V-90 powered subwoofers (2)
Sony KV32TS36 32-inch TV monitors (2)
Sony MDP-600 dual-side laserdisc player
Sony SLV-900 Hi-Fi VHS VCR
Xantech S-64 architectural loudspeaker (4)
Yamaha DSP-A2070 Cinema
DSP audio processor

VIDEO

Omnimount 300WBX-S wall mounts (2)
Sony KV 32TS36 32-inch TV monitor
Sony KV27TS32 27-inch TV monitor
Sony KV20TS29 20-inch TV monitors (2)
Sony KV13TS29 13-inch TV monitor
Sony SLV393 VHS VCR
Toshiba RF satellite control links (4)

LIGHTING CONTROL

LiteTouch 2000 CCU microprocessor
LiteTouch control stations (75)
LiteTouch module enclosures (11)
LiteTouch data-input module

TELEPHONE/INTERCOM

Panamax Unimax AC/Telco line protector
Panasonic PAN-1232-11D key system unit
Panasonic PAN-308-60-D door-phone adapter card
Panasonic PAN-308-65 door-phone intercoms (2)
Panasonic PAN-7020 speaker-phones (6)
Panasonic PAN-7030 LCD speaker-phones (10)

SECURITY

Door King CA-100 gate controller/intercom
ITI Caretaker Plus central control system
ITI alphanumeric entrance keypad
ITI auxiliary entrance keypads (2)
ITI fire/smoke sensors (10)
ITI motion sensors (7)
ITI recessed door sensors (13)
ITI interior sirens (4)
ITI exterior siren
ITI freeze sensor
ITI energy-saver module

SATELLITE/WEATHER

C Banc 25-degree LNB & Feedhorn assembly and motorized polar mount assembly
Channel Plus 3100 cable distribution
Channel Plus A3V/HB3 channel modulator
Panamax Coaxmax SSP/D power line protector
Rainwise weather video processor w/sensors
RGB-to-NTSC adaptor
Toshiba TRX-2220 integrated satellite receiver
Winegard Pinnacle 10-foot mesh dish

Installation by
Electronic Design Associates,
3545 South Park Drive,
Jackson Hole, WY 83001;
(307) 733-1330.
Fax (307) 733-1324.
See Resources for
additional listings.



In addition to offering impressive audio and video to the media room, this equipment stack provides music and video to 11 other zones throughout the whole-house system, which is controlled by Audioaccess and LiteTouch wall panels. Fabric panels on the back wall (below) deflect sound to the side walls of the theater.

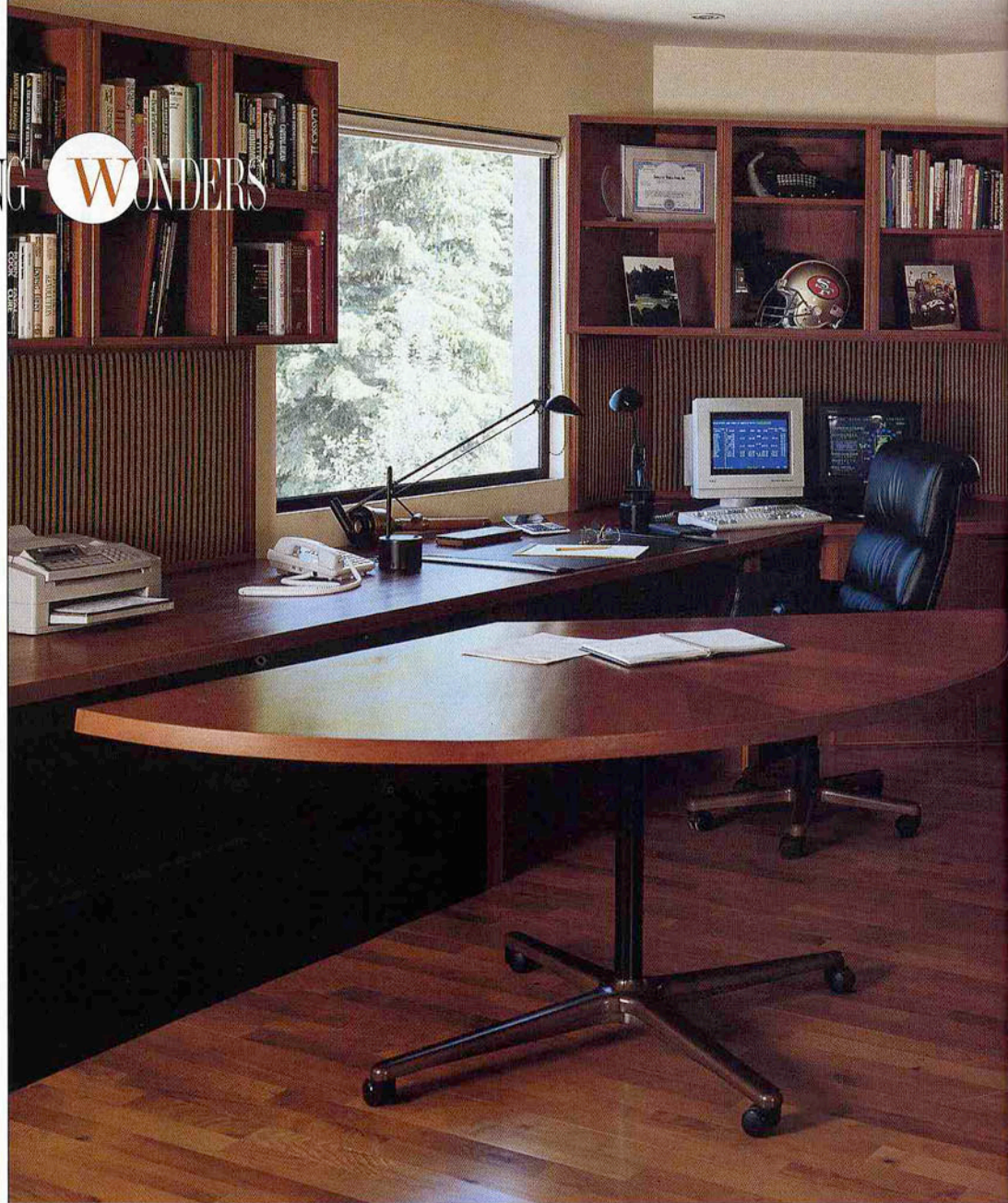
ated by their own IR remote control units, the fans are isolated from the Audioaccess/LiteTouch system to prevent interference. Large windows on three sides of the living room capture sweeping views of the Grand Tetons. The LiteTouch system controls clerestory windows and, recessed above the windows, motorized sunshades and thermal shades; the woven-nylon sunshades admit views but control heat gain, while the quilted thermal shades can be lowered on cold nights to help keep the house warm.

At the heart of the house is a 22½- × 26-foot home theater, designed to be totally insulated



WORKING WONDERS

Fax machines, computer modems and on-line information services provide fingertip access to the rest of the world from one of two offices in the woods. Fine cabinetry and office furnishings are further enhanced by the natural setting.



from external sound and light. "We told Tom we needed to avoid parallel surfaces to prevent standing waves and we needed to avoid light," explains McDonald. "So he lined all the walls with lead, sandwiched between drywall. Lead is the best material to reduce sound transmission without building thicker walls. And he gave the room massive wooden doors that keep light out and sound in. So you can run up the volume in the theater without causing any comfort problems for anyone else in the house."

"None of the surfaces resonate," notes Ward. "We dispersed sound by angling the ceiling and the back wall's fabric panels, which protrude slightly in the center to deflect sound to the side



walls. We even isolated the metal duct work in the ceiling on hangers to keep it from reverberating."

Red-leather Ligne Rosset armchairs and a contemporary sofa comprise the theater's comfortable seating. They face a wood-and-metal media wall centering on a 100-inch rear-projection Uniscreen. A custom Uniscreen angled-mirror assembly folds the beam from the Vidikron projector to fit the five-foot depth of the equipment space, which allows easy access to the rack-mounted gear. "We painted the equipment room black to prevent reflections from stray light on that side of the screen," notes McDonald. Source equipment includes a Yamaha surround-sound DSP, a dual-side Sony laserdisc player and a Sony

Hi-Fi VCR, while a pair of M&K powered subwoofers give the audio a heavy-duty low end. "The sound of this media room rivals anything I've ever heard," says McDonald. "The room's acoustic design, speaker placement, seating position, and the Yamaha processor all add up to a tremendous audio impact."

The LiteTouch central controller is linked to the HVAC system and equipped with a modem, so the couple can tell it to heat up the house when they're returning from a trip. They can also arm, disarm, or check the status of the security system from any phone in or outside the house, as well as from two house keypads. "All the security sensors and detectors are wireless transmitters," explains EDA's Gene Masserini. "The system automatically dials a local security company, specifying whether the problem is fire, break-in or freeze." Triggered when a sensor in one of the mechanical spaces registers 42 degrees, the freeze alarm can prevent major damage if, say, the owners aren't home and a storm knocks the power out. A nighttime security breach signals the LiteTouch controller to minimize indoor lighting and maximize outdoor lighting, giving residents the sight

A fire pole provides a quick escape to the main level. Comfortable built-in seating (above) invites settling in with a good book alongside the fireplace inglenook in the living room.



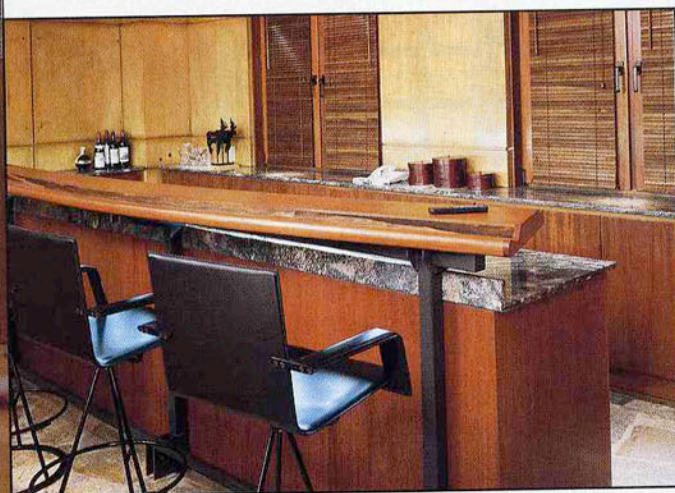
Curved windows overlooking the living room direct natural light inside one of the upper offices, creating a pleasing work atmosphere. Background music is supplied through Xantech speakers controlled by Audioaccess panels, providing access to multisource audio including a Sony 100-disc CD changer and a Yamaha dual-well cassette deck.

WORKING WONDERS

advantage. When the system detects fire, it automatically closes the house's interior fire doors and opens the front gate to admit firefighters.

A Panasonic key telephone system permits communication with the front gate and the main- and guest-wing entrances from any phone in the house; a button on house phones opens the gate. "You can also use the phone system as a house intercom, putting your voice on the speaker on one phone or all of them," notes Masserini. "We've got a Panamax surge protector for the phone lines—we see more lightning damage over phone lines than power lines, now that so many devices are protected from power-line surges. But we protect all lines. We get a lot of storms here, and lightning doesn't care what the line carries or

A Sony television is mounted above the bar for convenient viewing while relaxing after a busy day in the upstairs offices.



whether it's buried or above ground."

The West can still get wild, but it seems mighty civilized in this smart chalet. "We don't have much wall space for paintings, but it's hard to improve on the views," says the homeowner. "I'm grateful for the electronics that allow me to work here—otherwise I'd be working in downtown L.A. or retired, and neither of those choices interests me."

There's one device he's not ready to add, despite joking suggestions from envious colleagues: "They say I should put in a videophone so they can see how I work. I say no way." ♦

